



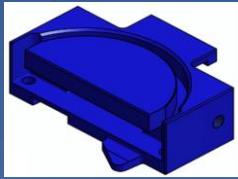
OEM BOP RAM BLOCKS & ASSEMBLY CATALOG

INTEGRATED®

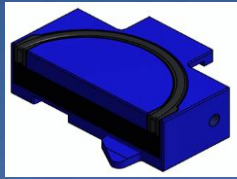
is an established OEM manufacturer of API Monogrammed Ram Blocks and Assemblies that meet or exceed industry standards & requirements. All equipment is designed, engineered, manufactured and validated as per API 16A latest edition. Integrated offers a wide variety of industry styles, sizes and pressure rating. All styles are engineered to fit & function in Integrated OEM BOPs and Industry standard competitor pressure control BOP equipment.

7-1/16" IE™ RAM BLOCKS & ASSEMBLIES

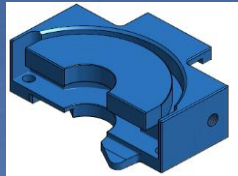
CSO Block



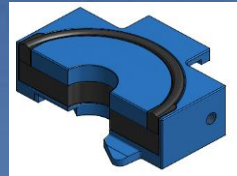
CSO Assembly



Pipe Ram Block

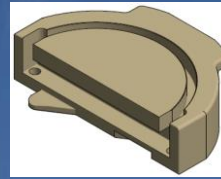


Pipe Ram Assembly

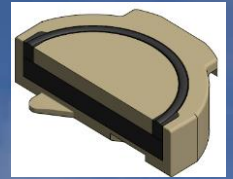


9" IWPT™ RAM BLOCKS & ASSEMBLIES

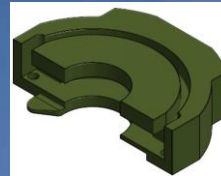
CSO Block



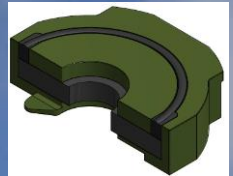
CSO Assembly



Pipe Ram Block

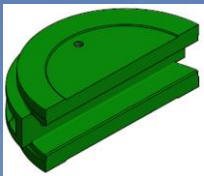


Pipe Ram Assembly



11" & 13-5/8" I70™ (IWST™ Style) RAM BLOCKS & ASSEMBLIES

CSO Block



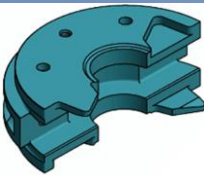
Carrier



CSO Assembly



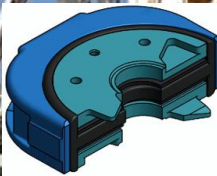
Pipe Ram Block



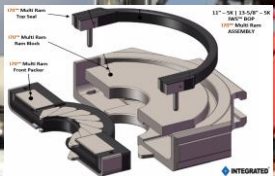
Carrier



Pipe Ram Assembly

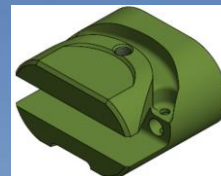


Multi Ram



7-1/16", 11" & 13-5/8" IU™ RAM BLOCKS & ASSEMBLIES

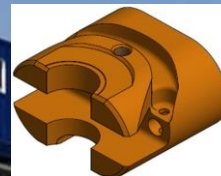
CSO Block



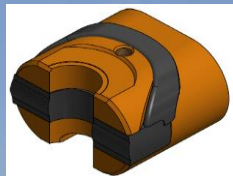
CSO Assembly



Pipe Ram Block



Pipe Ram Assembly



Variable Bore Ram (VBR)



Shear Blind Ram (SBR)



**INTEGRATED OEM API 16A MONOGRAMMED
TYPE IE™ (WSI Style) | IWP™ (LWP Style) | I70™ (LWS Style) | IU™ (U Style) RAM BLOCKS & ASSEMBLIES**

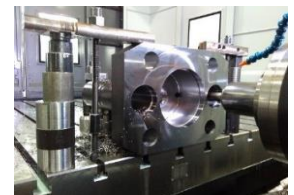
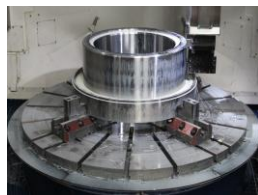
INTEGRATED OEM MANUFACTURED – API MONOGRAMMED EQUIPMENT & PRODUCTS

API 6A	API 6A	API 6A - API 6C	API 16A	API 16A API 16AR	API 20E	ASME U CRN	API 16A - ISO AQ
WELLHEAD COMPONENTS	PRESSURE CONTROL VALVES	CHOKE & KILL MANIFOLDS	BLOWOUT PREVENTERS (BOP) RAM BLOCKS	REMANUFACTURING RECERTIFICATION SERVICE	BSL BOLTING	PULSATION DAMPENERS	ELASTOMERS OEM & SPARES
Tubing & Casing Spools	IFC™ Slab Gate Valves 1-13/16" to 4-1/2"	Drilling Choke Manifolds	7-1/16" IE™ Style: Single, Double & Triple Ram BOPs	BOPs: Annular & Ram All Major OEM Brands	Ram & Annular BOP Bolting	PPD (Production Pulsation Damper) Sizes: 1, 2.5, 5, 10 & 20 gal units Pressure: up to 7,500 psi	BOP Annular Packing Elements (Materials: NR, NBR & HNBR)
Tubing & Casing Hangers	DrillFLO™ Slab Gate Valves (bi-directional & 3G) 2-1/16" to 7-1/16"	Kill Manifolds	9" IWP™ Style: Single & Double Ram BOPs	Choke & Kill Manifolds	Valve Bolting	DPD (Drilling Pulsation Damper) Sizes: 10 & 20 gal units Pressure: up to 7,500 psi	BOP Ram Front Packers, Top Seals & Door Seals
Tree Caps	AceFLO™ Expanding Gate Valves (bi-directional & 3G) 2-1/16" to 7-1/16"	Frac Flow Back Manifolds	11" & 13-5/8" IWS™ Style: Single & Double Ram BOPs	API Valves (FC, FLS, Etc.)			BOP Annular & Ram Repair Carded Seal Kits
Tees & Crosses			7-1/16" through 13-5/8" IU™ Style: Single & Double Ram BOPs (Shear & Non-Shear)	Pulsation Dampeners			Pulsation Damper Diaphragms (Bladders)
Companion Flanges			7-1/16" through 21-1/4" ISA™ Style: Spherical Annular BOPs				Pipe Wipers & Stripper Rubbers
PE Seals			7-1/16" through 13-5/8" IK™ Style: GK Annular BOP				Custom Manufacturing
			7-1/16" through 13-5/8" Ram Blocks (IE™, IWP™, I70™ & IU™)				

Integrated's API Certified – Licensed OEM plants provide state-of-the-art manufacturing of our Engineered-Designed Pressure Control Equipment and Elastomeric Products.



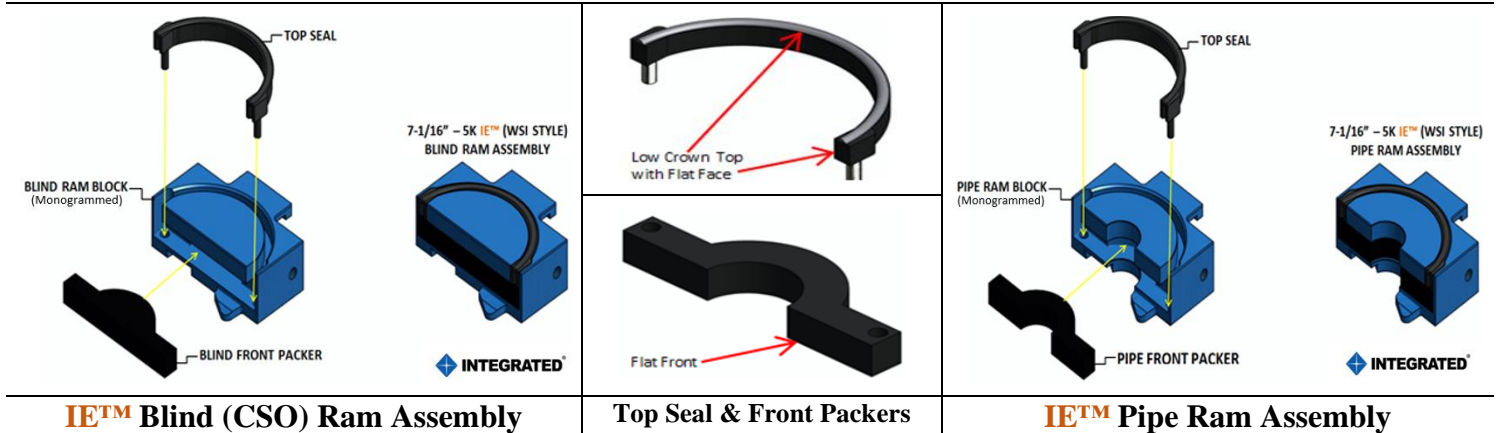
Integrated's Oracle - JD Edwards Enterprise Resource Planning (ERP) system integrates our global manufacturing, distribution facilities and service centers



**INTEGRATED OEM API 16A MONOGRAMMED
TYPE IE™ (WSI Style) | IWP™ (LWP Style) | I70™ (LWS Style) | IU™ (U Style) RAM BLOCKS & ASSEMBLIES**

INDEX

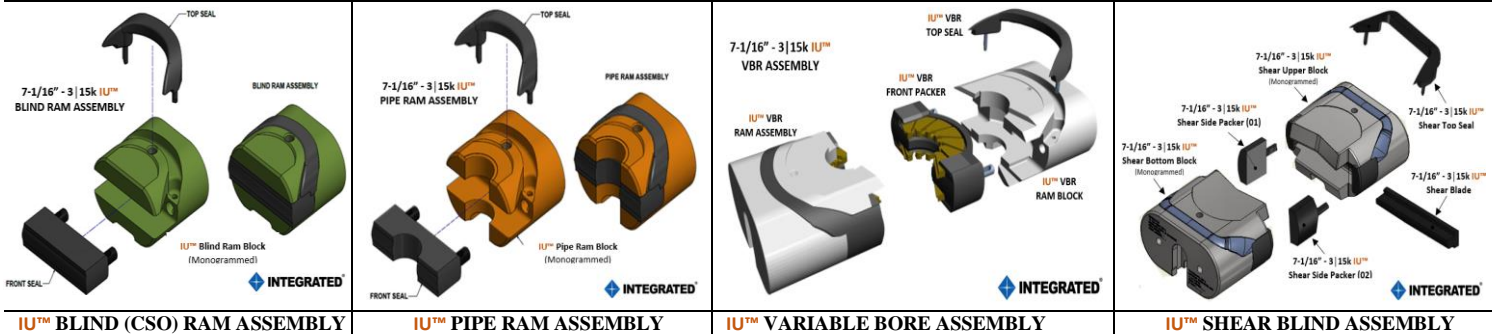
1 GENERAL INFORMATION	Page No.
➤ Integrated Manufactured API Monogrammed Pressure and Flow Control Equipment and Products	2
2 7-1/16" – 3/5k, IE™ (WSI Style) RAM ASSEMBLIES (Includes Front Packers & Top Seals)	
➤ Sizes: CSO, 1.66", 1.90", 2-1/16", 2-3/8", 2-7/8", 3-1/2", 4", 4-1/2", 5" & 5-1/2"	4
➤ I-FLEX™: 2-3/8" to 2-7/8"	4
3 7-1/16" – 3/15k, IU™ (U Style) RAM ASSEMBLIES (Includes Front Packers & Top Seals)	
➤ Sizes: CSO, 2-3/8", 2-7/8", 3-1/2", 4", 4-1/2", 5" & 5-1/2"	5
➤ Variable Bore Ram (VBR): 2-3/8" to 3-1/2" & 2-7/8" to 4"	5
➤ Shear Blind Ram (SBR): 7-1/16"	5
4 9" – 3/5k, IWP™ (IWP Style) RAM ASSEMBLIES (Includes Front Packers & Top Seals)	
➤ Sizes: CSO, 2-3/8", 2-7/8", 3-1/2", 4", 4-1/2", 5" & 5-1/2"	6
5 11" – 3k, I70™ (IWS Style) RAM ASSEMBLIES (Includes Front Packers & Top Seals)	
➤ Sizes: CSO, 2-3/8", 2-7/8", 3-1/2", 4", 4-1/2", 5", 6-5/8", 7" & 7-5/8"	7
6 11" – 5k, I70™ (IWS Style) RAM ASSEMBLIES (Includes Front Packers & Top Seals)	
➤ Sizes: CSO, 2-3/8", 2-7/8", 3-1/2", 4", 4-1/2", 5", 5-1/2", 6-5/8", 7", 7-5/8" & 8-5/8"	8
➤ Multi Ram: 2-7/8" to 5" & 3-1/2" to 5-1/2"	8
7 11" – 3/10k, IU™ (U Style) RAM ASSEMBLIES (Includes Front Packers & Top Seals)	
➤ Sizes: CSO, 2-3/8", 2-7/8", 3-1/2", 4", 4-1/2", 5", 5-1/2", 6-5/8", 7", 7-5/8", 8-5/8" & 9-5/8"	9
➤ Variable Bore Ram (VBR): 2-7/8" to 5" & 3-1/2" to 5-1/2"	9
➤ Shear Blind Ram (SBR): 11"	9
8 13-5/8" – 5k, I70™ (IWS Style) RAM ASSEMBLIES (Includes Front Packers & Top Seals)	
➤ Sizes: CSO, 2-3/8", 2-7/8", 3-1/2", 4", 4-1/2", 5", 5-1/2", 6-5/8", 7", 7-5/8", 8-5/8" & 9-5/8"	10
➤ Multi Ram: 2-7/8" to 5" & 4-1/2" to 7"	10
9 13-5/8" – 3/10k, IU™ (U Style) RAM ASSEMBLIES (Includes Front Packers & Top Seals)	
➤ Sizes: CSO, 2-3/8", 2-7/8", 3-1/2", 4", 4-1/2", 5", 5-1/2", 6-5/8", 7", 7-5/8", 8-5/8" & 9-5/8"	11
➤ Variable Bore Ram (VBR): 2-7/8" to 5", 3-1/2" to 5-1/2" & 4-1/2" to 7"	11
➤ Shear Blind Ram (SBR): 13-5/8"	11
10 INTEGRATED CONTACT INFORMATION	
➤ Locations Address Contact Numbers Email Address Website ARLS & SSP	12

INTEGRATED OEM API 16A MONOGRAMMED
TYPE IE™ (WSI Style) | IWP™ (LWP Style) | I70™ (LWS Style) | IU™ (U Style) RAM BLOCKS & ASSEMBLIES
2.0
IE™ 7-1/16" - 3 | 5K RAM BOP (WSI Style)
RAM ASSEMBLIES | RAM BLOCKS | FRONT PACKERS | FLEX PACKER | TOP SEAL

IE™ Blind (CSO) Ram Assembly
Top Seal & Front Packers
IE™ Pipe Ram Assembly
IE™ CSO AND PIPE RAMS

IE™ Ram Block Size	IE™ Assembly Part Number	IE™ Assembly Sub-Component Part Number		
		Block	Front Packer	Top Seal
CSO	70-203-001	70-202-001	70-101-001-1	70-101-000-F
1.66"	70-203-001-15	70-202-001-0	70-101-002-15	70-101-000-F
1.90"	70-203-001-1	70-202-001-1	70-101-002-1	70-101-000-F
2-1/16"	70-203-001-11	70-202-001-11	70-101-002-11	70-101-000-F
2-3/8"	70-203-001-2	70-202-001-2	70-101-002-2	70-101-000-F
2-7/8"	70-203-001-3	70-202-001-3	70-101-002-3	70-101-000-F
3-1/2"	70-203-001-5	70-202-001-5	70-101-002-5	70-101-000-F
4"	70-203-001-6	70-202-001-6	70-101-002-6	70-101-000-F
4-1/2"	70-203-001-7	70-202-001-7	70-101-002-7	70-101-000-F
5"	70-203-001-8	70-202-001-8	70-101-002-8	70-101-000-F
5-1/2"	70-203-001-13	70-202-001-13	70-101-002-13	70-101-000-F

I-FLEX™

I-FLEX™ Size	I-FLEX™ Assembly Part Number	I-FLEX™ Assembly Sub-Component Part Number		
		Block	Front Packer	Top Seal
2-3/8" to 2-7/8"	70-203-001-25	70-202-001-3	70-202-001-3	70-101-000-F

INTEGRATED OEM API 16A MONOGRAMMED
TYPE IE™ (WSI Style) | IWP™ (LWP Style) | I70™ (LWS Style) | IU™ (U Style) RAM BLOCKS & ASSEMBLIES
3.0
IU™ 7-1/16" - 3 | 15K RAM BOP (U Style)
RAM ASSEMBLIES | RAM BLOCKS | FRONT PACKERS | TOP SEAL | VBR | SBR

IU™ CSO AND PIPE RAMS

IU™ Ram Block Size	IU™ Assembly Part Number	IU™ Assembly Sub-Component Part Number		
		Block	Safety Front Packer	Top Seal
CSO	70-0705-00241	70-0705-00232	70-0703-00009	70-0703-00029
2-3/8"	70-0705-00242	70-0705-00233	70-0703-00010	70-0703-00029
2-7/8"	70-0705-00226	70-0705-00212	70-0703-00011	70-0703-00029
3-1/2"	70-0705-00248	70-0705-00234	70-0703-00012	70-0703-00029
4"	70-0705-00244	70-0705-00235	70-0703-00013	70-0703-00029
4-1/2"	70-0705-00245	70-0705-00236	70-0703-00014	70-0703-00029
5"	70-0705-00246	70-0705-00237	70-0703-00015	70-0703-00029
5-1/2"	70-0705-00247	70-0705-00238	70-0703-00016	70-0703-00029

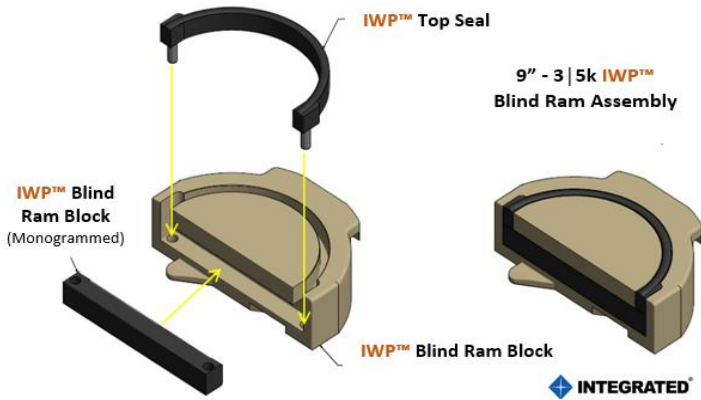
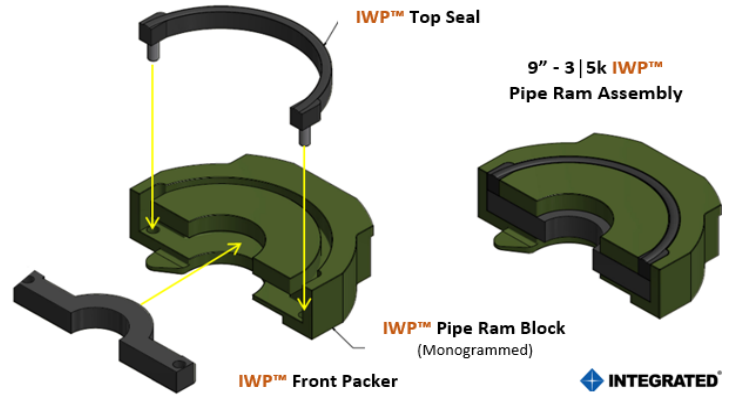
IU™ VARIABLE BORE RAM (VBR)™

IU™ Ram Block Size	IU™ Assembly Part Number	IU™ Assembly Sub-Component Part Number		
		Block	Front Packer	Top Seal
2-3/8" to 3-1/2"	70-0705-00248	70-0705-00239	95-0710000-V-03	70-0703-00029-V
2-7/8" to 4"	70-0705-00249	70-0705-00240	95-0710000-V-04	70-0703-00029-V

IU™ SHEAR BLIND RAM (SBR)™
Assembly Part Number: 70-0705-00228

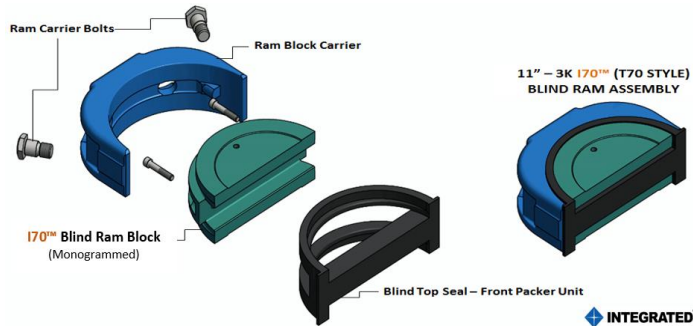
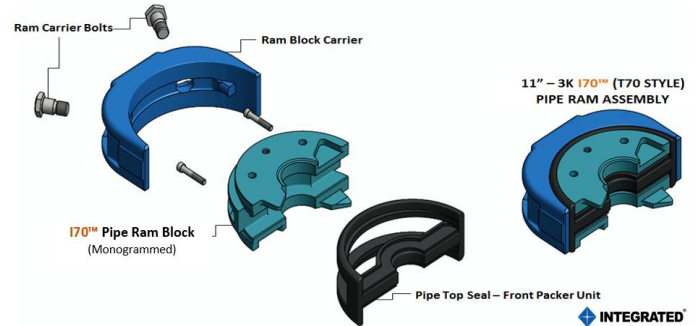
IU™ Part Description	IU™ Assembly Sub-Component Part Number					
	Top Block	Bottom Block	Blade Packer w/ Side Packers - Combo	Top Seal	Right Side Packer	Left Side Packer
SBR	70-0705-00213	70-0705-00214	95-07100023-BP	70-0703-00029	95-07100023-SP-01	95-07100023-SP-02

Note: In the 7-1/16" – 3/15k IU™ Style, the Top Seal is the same for CSO, all pipe sizes and SBR

INTEGRATED OEM API 16A MONOGRAMMED
TYPE IE™ (WSI Style) | IWP™ (LWP Style) | I70™ (LWS Style) | IU™ (U Style) RAM BLOCKS & ASSEMBLIES
4.0
IWP™ 9" - 3 | 5K RAM BOP (LWP Style)
RAM ASSEMBLIES | RAM BLOCKS | FRONT PACKERS | TOP SEAL

IWP™ Blind (CSO) Ram Assembly

IWP™ Pipe Ram Assembly
IWP™ CSO AND PIPE RAMS

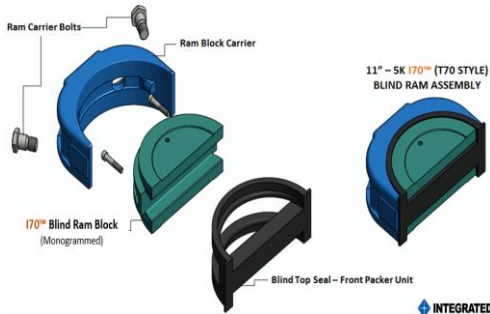
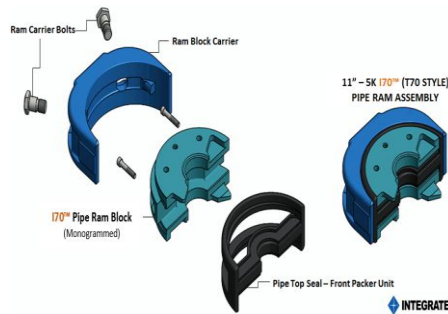
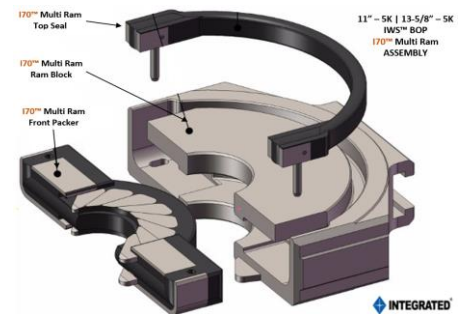
IWP™ Ram Block Size	IWP™ Assembly Part Number	IWP™ Assembly Sub-Component Part Number		
		Block	Front Packer	Top Seal
CSO	70-301-019-2	70-300-019-3	70-102-002-2	70-102-000
2-3/8"	70-301-019-3	70-300-019-4	70-102-002-3	70-102-000
2-7/8"	70-301-019-4	70-300-019-5	70-102-002-5	70-102-000
3-1/2"	70-301-019-5	70-300-019-6	70-102-002-6	70-102-000
4"	70-301-019-6	70-300-019-7	70-102-002-7	70-102-000
4-1/2"	70-301-019-7	70-300-019-9	70-102-002-9	70-102-000
5"	70-301-019-8	70-300-019-10	70-102-002-19	70-102-000
5-1/2"	70-301-019-2	70-300-019-3	70-102-002-15	70-102-000

Note: No Flex, Multi Ram or VBR's are available in the 9" - 3/5k IWP™ Style

INTEGRATED OEM API 16A MONOGRAMMED
TYPE IE™ (WSI Style) | IWP™ (LWP Style) | I70™ (LWS Style) | IU™ (U Style) RAM BLOCKS & ASSEMBLIES
5.0
I70™ 11" - 3K RAM BOP (LWS Style)
RAM ASSEMBLIES | RAM BLOCKS | FRONT PACKERS - TOP SEAL UNIT

I70™ Blind (CSO) Ram Assembly

I70™ Pipe Ram Assembly
I70™ CSO AND PIPE RAMS

I70™ Ram Block Size	I70™ Assembly Part Number	I70™ Assembly Sub-Component Part Number			
		Block	Carrier	Carrier Bolts	Front Packer Top Seal Unit
CSO	70-1103006	70-1103006	70-1103005	26-012-203	70-401-711
2-3/8"	70-1103104-6	70-1103004-6	70-1103005	26-012-203	70-401-711-1
2-7/8"	70-1103104-7	70-1103004-7	70-1103005	26-012-203	70-401-711-2
3-1/2"	70-1103104-1	70-1103004-1	70-1103005	26-012-203	70-401-711-4
4"	70-1103104-2	70-1103004-2	70-1103005	26-012-203	70-401-711-5
4-1/2"	70-1103104-3	70-1103004-3	70-1103005	26-012-203	70-401-711-6
5"	70-1103104-4	70-1103004-4	70-1103005	26-012-203	70-401-711-7
5-1/2"	70-1103104-5	70-1103004-5	70-1103005	26-012-203	70-401-711-8
6-5/8"	70-1103104-14	70-1103004-14	70-1103005	26-012-203	70-401-711-9
7"	70-1103104-15	70-1103004-15	70-1103005	26-012-203	70-401-711-10
7-5/8"	70-1103104-16	70-1103004-16	70-1103005	26-012-203	70-401-711-11

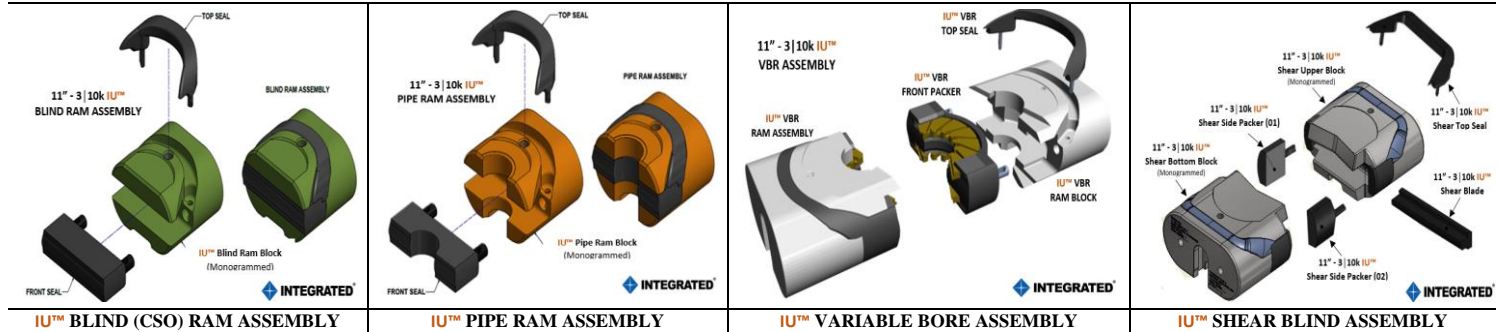
Note: No Multi Ram Assembly is available in the 11" - 3k I70™ Style

INTEGRATED OEM API 16A MONOGRAMMED
TYPE IE™ (WSI Style) | IWP™ (LWP Style) | I70™ (LWS Style) | IU™ (U Style) RAM BLOCKS & ASSEMBLIES
6.0
I70™ 11" - 5K RAM BOP (LWS Style)
RAM ASSEMBLIES | RAM BLOCKS | FRONT PACKERS - TOP SEAL UNIT | MULTI RAM

I70™ Blind (CSO) Ram Assembly

I70™ Pipe Ram Assembly

I70™ Multi Ram Assembly
I70™ CSO AND PIPE RAMS

I70™ Ram Block Size	I70™ Assembly Part Number	I70™ Assembly Sub-Component Part Number			
		Block	Carrier	Carrier Bolts	Front Packer Top Seal Unit
CSO	70-1105106	70-1105006	70-1105005	26-012-203	70-401-701
2-3/8"	70-1105104-3	70-1105004-3	70-1105005	26-012-203	70-401-701-1
2-7/8"	70-1105104-4	70-1105004-4	70-1105005	26-012-203	70-401-701-2
3-1/2"	70-1105104-6	70-1105004-6	70-1105005	26-012-203	70-401-701-4
4"	70-1105104-8	70-1105004-8	70-1105005	26-012-203	70-401-701-5
4-1/2"	70-1105104-7	70-1105004-7	70-1105005	26-012-203	70-401-701-6
5"	70-1105104-9	70-1105004-9	70-1105005	26-012-203	70-401-701-7
5-1/2"	70-1105104-13	70-1105004-13	70-1105005	26-012-203	70-401-701-8
6-5/8"	70-1105104-14	70-1105004-14	70-1105005	26-012-203	70-401-701-9
7"	70-1105104-15	70-1105004-15	70-1105005	26-012-203	70-401-701-10
7-5/8"	70-1105104-16	70-1105004-16	70-1105005	26-012-203	70-401-701-11
8-5/8"	70-1105104-17	70-1105004-17	70-1105005	26-012-203	70-401-701-12

I70™ MULTI RAM

I70™ Multi Ram Size	I70™ Assembly Part Number	I70™ Assembly Sub-Component Part Number		
		Block	Front Packer	Top Seal
2-7/8" to 5"	70-401-702-VK	70-401-701-V2	70-401-701-V	70-401-701-V1
3-1/2" to 5-1/2"	70-401-702-VK2	70-401-701-V4	70-401-701-V3	70-401-701-V1

INTEGRATED OEM API 16A MONOGRAMMED
TYPE IE™ (WSI Style) | IWP™ (LWP Style) | I70™ (LWS Style) | IU™ (U Style) RAM BLOCKS & ASSEMBLIES
7.0
IU™ 11" - 3 | 10K RAM BOP (U Style)
RAM ASSEMBLIES | RAM BLOCKS | FRONT PACKERS | TOP SEAL | VBR | SBR

IU™ CSO AND PIPE RAMS

IU™ Ram Block Size	IU™ Assembly Part Number	IU™ Assembly Sub-Component Part Number		
		Block	Front Packer	Top Seal
CSO	95-1110101	95-1110001	95-111002	95-111000
2-3/8"	95-1110101-2	95-1110001-2	95-1110002-2	95-111000
2-7/8"	95-1110101-3	95-1110001-3	95-1110002-3	95-111000
3-1/2"	95-1110101-5	95-1110001-5	95-1110002-5	95-111000
4"	95-1110101-6	95-1110001-6	95-1110002-6	95-111000
4-1/2"	95-1110101-7	95-1110001-7	95-1110002-7	95-111000
5"	95-1110101-8	95-0710001-8	95-1110002-8	95-111000
5-1/2"	95-1110101-9	95-1110001-9	95-1110002-9	95-111000
6-5/8"	95-1110101-10	95-1110001-10	95-1110002-10	95-111000
7"	95-1110101-11	95-1110001-11	95-1110002-11	95-111000
7-5/8"	95-1110101-12	95-1110001-12	95-1110002-12	95-111000
8-5/8"	95-1110101-13	95-1110001-13	95-1110002-13	95-111000
9-5/8"	95-1110101-14	95-1110001-14	95-1110002-14	95-111000

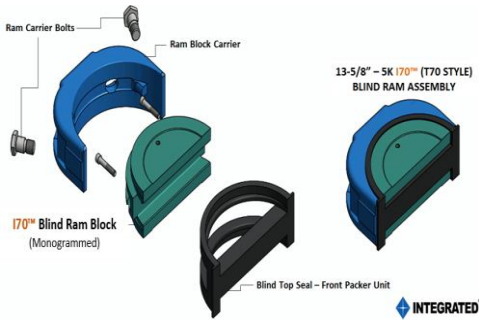
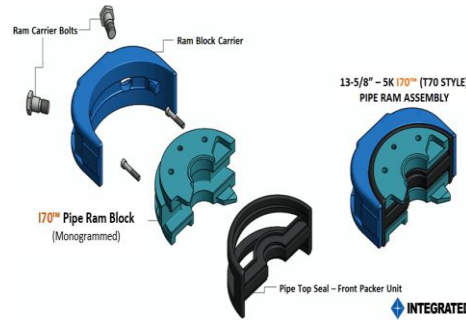
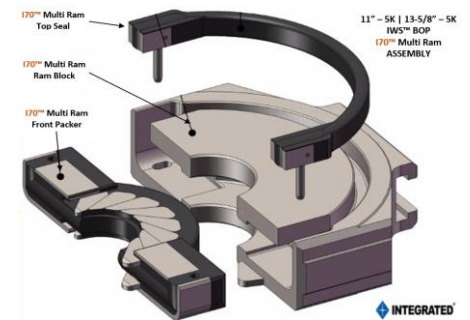
IU™ VARIABLE BORE RAM (VBR)™

IU™ VBR Size	IU™ Assembly Part Number	IU™ Assembly Sub-Component Part Number		
		Block	Front Packer	Top Seal
2-7/8" to 5"	95-1110000-VK	95-111000-V1	95-1110000-V-03	95-111000
3-1/2" to 5-1/2"	95-1110000-VK1	95-111000-V2	95-1110000-V-05	95-111000

IU™ SHEAR BLIND RAM (SBR)™
Assembly Part Number: 95-1110100

IU™ Part Description	IU™ Assembly Sub-Component Part Number					
	Top Block	Bottom Block	Blade Packer	Top Seal	Right Side Packer	Left Side Packer
SBR	95-1110002	95-1110003	95-11100023-BP	95-111000	95-11100023-SP-01	95-11100023-SP-02

Note: For 11" - 3/10k IU™, the Top Seal is the same for the CSO, all Pipe Sizes, VBR and SBR

INTEGRATED OEM API 16A MONOGRAMMED
TYPE IE™ (WSI Style) | IWP™ (LWP Style) | I70™ (LWS Style) | IU™ (U Style) RAM BLOCKS & ASSEMBLIES
8.0
I70™ 13-5/8" - 5K RAM BOP (LWS Style)
RAM ASSEMBLIES | RAM BLOCKS | FRONT PACKERS - TOP SEAL UNIT | MULTI RAM

I70™ Blind (CSO) Ram Assembly

I70™ Pipe Ram Assembly

I70™ Multi Ram Assembly
I70™ CSO AND PIPE RAMS

I70™ Ram Block Size	I70™ Assembly Part Number	I70™ Assembly Sub-Component Part Number			
		Block	Carrier	Carrier Bolts	Front Packer Top Seal Unit
CSO	70-1305101	70-1305001	70-1305005	26-012-135	70-401-801
2-3/8"	70-135101-1	70-1305001-1	70-1305005	26-012-135	70-401-801-1
2-7/8"	70-135101-2	70-1305001-2	70-1305005	26-012-135	70-401-801-2
3-1/2"	70-135101-3	70-1305001-3	70-1305005	26-012-135	70-401-801-3
4"	70-135101-4	70-1305001-4	70-1305005	26-012-135	70-401-801-4
4-1/2"	70-135101-5	70-1305001-5	70-1305005	26-012-135	70-401-801-5
5"	70-135101-6	70-1305001-6	70-1305005	26-012-135	70-401-801-6
5-1/2"	70-135101-7	70-1305001-7	70-1305005	26-012-135	70-401-801-7
6-5/8"	70-135101-8	70-1305001-8	70-1305005	26-012-135	70-401-801-8
7"	70-135101-9	70-1305001-9	70-1305005	26-012-135	70-401-801-9
7-5/8"	70-135101-10	70-1305001-10	70-1305005	26-012-135	70-401-801-10
8-5/8"	70-135101-11	70-1305001-11	70-1305005	26-012-135	70-401-801-11
9-5/8"	70-135101-12	70-1305001-12	70-1305005	26-012-135	70-401-801-12

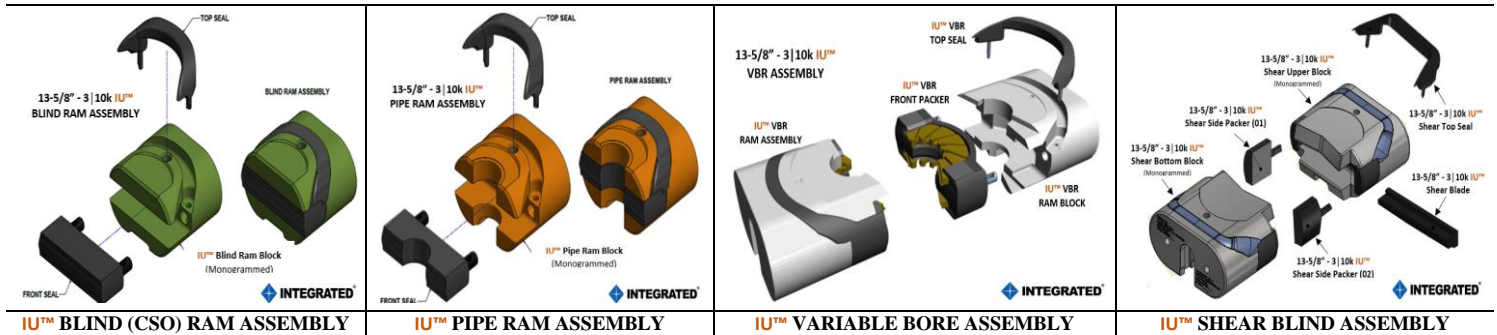
I70™ MULTI RAM

I70™ Multi Ram Size	I70™ Assembly Part Number	I70™ Assembly Sub-Component Part Number		
		Block	Front Packer	Top Seal
2-7/8" to 5"	70-135101-VK1	70-135101-V03	70-135101-V02	70-135101-V01
4-1/2" to 7"	70-135101-VK2	70-135101-V06	70-135101-V05	70-135101-V04

INTEGRATED OEM API 16A MONOGRAMMED TYPE IE™ (WSI Style) | IWP™ (LWP Style) | I70™ (LWS Style) | IU™ (U Style) RAM BLOCKS & ASSEMBLIES

9.0

IU™ 13-5/8" - 3 | 10K RAM BOP (U Style) RAM ASSEMBLIES | RAM BLOCKS | FRONT PACKERS | TOP SEAL | VBR | SBR



IU™ CSO AND PIPE RAMS

IU™ Ram Block Size	IU™ Assembly Part Number	IU™ Assembly Sub-Component Part Number		
		Block	Front Packer	Top Seal
CSO	70-1303-00026	70-1303-00004	70-1303-00027	70-1303-00022
2-3/8"	70-1303-00092	70-1303-00028	70-1303-00041	70-1303-00022
2-7/8"	70-1303-00093	70-1303-00029	70-1303-00042	70-1303-00022
3-1/2"	70-1303-00094	70-1303-00030	70-1303-00043	70-1303-00022
4"	70-1303-00095	70-1303-00031	70-1303-00044	70-1303-00022
4-1/2"	70-1303-00096	70-1303-00032	70-1303-00045	70-1303-00022
5"	70-1303-00097	70-1303-00033	70-1303-00046	70-1303-00022
5-1/2"	70-1303-00089	70-1303-00034	70-1303-00047	70-1303-00022
6-5/8"	70-1303-00098	70-1303-00098	70-1303-00049	70-1303-00022
7"	70-1303-00023	70-1303-00013	70-1303-00020	70-1303-00022
7-5/8"	70-1303-00099	70-1303-00036	70-1303-00050	70-1303-00022
8-5/8"	70-1303-00100	70-1303-00037	70-1303-00051	70-1303-00022
9-5/8"	70-1303-00101	70-1303-00090	70-1303-00021	70-1303-00022

IU™ VARIABLE BORE RAM (VBR)™

IU™ VBR Size	IU™ Assembly Part Number	IU™ Assembly Sub-Component Part Number		
		Block	Front Packer	Top Seal
2-7/8" to 5"	70-1303-00019	70-1303-00009	70-1303-00017	70-1303-00022-V
3-1/2" to 5-1/2"	70-1303-00104	70-1303-00091	70-1303-00017	70-1303-00022-V
4-1/2" to 7"	70-1303-00018	70-1303-00008	70-1303-00016	70-1303-00022-V

IU™ SHEAR BLIND RAM (SBR)™ Assembly Part Number: 95-1303-00010

IU™ Part Description	IU™ Assembly Sub-Component Part Number					
	Top Block	Bottom Block	Blade Packer	Top Seal	Right Side Packer	Left Side Packer
SBR	70-1303-00007	70-1303-00006	95-1310023-BP	70-1303-00022	95-1310023-SP-01	95-1310023-SP-02

Note: For 13-5/8" - 3/10k IU™, the Top Seal is the same for the CSO, all Pipe Sizes and SBR

For 13-5/8" - 3/10k IU™, the VBR Front Packer for the 2-7/8" to 5", 3-1/2" to 5-1/2" are the same. The only difference is the ram block



USA | Canada | Mexico | Colombia | Dubai | Singapore | Australia | Bahrain | Europe



INTEGRATED[®]

GLOBAL HEADQUARTERS

5701 Brittmoore Road, Houston, Texas 77041 USA

Contact: 713-785-7075 | Fax: 713-785-7099 | Email: sales@integratedwww.com | Website: integratedwww.com



INTEGRATED[®]
ELASTOMERS

OEM ELASTOMER MANUFACTURING PLANT

31811 Industrial Park Drive, Pinehurst, Texas 77362 USA



INTEGRATED[®]
EQUIPMENT

WEST TEXAS DISTRIBUTION FACILITY

13020 Hwy 191 – Suite H, Midland, Texas 79707 USA

INTEGRATED EQUIPMENT LIMITED

OEM EQUIPMENT MANUFACTURING PLANT

Pune-Nagar Highway, Kondhapuri, Pune 412209

❖ **Australia ARLF** (Authorized Repair License Facility) & Distribution

Well Control Solutions (WCS)

24 Enterprise Street, Richlands, QLD 4077

Contact: +61-7-3375-4388 | Email: sales@well-control.com.au



❖ **Canada ARLF** (Authorized Repair License Facility) & Distribution

Red Deer Well Control (RDWC)

6670 – 53rd Avenue, Unit #B, Edmonton, Alberta T6B 3H8

Contact: +780-466-3149 | Email: aspalding@rdwc.com

